

# YT29A Air Leg Rock Drill

The YT29A rock drill is the most strongest, powerful and highly efficient rock drill in the range. It gives improved productivity and drill steel economy and can be used on all rock formation and in all kinds of applications.

## Specification:

Weight	26 KG
All length	660MM
Air consumption	≤82L/S
Drilling Frequency	≥40HZ
Air pipe inner Dia.	25MM
Water pipe inner Dia.	13MM
Drilling Hole Dia.	34-42MM
Drilling Depth	5M
Shank Size	22*108mm
Air pressure	0.63Mpa
FT160 Air leg:	
Weight	17KG
Length	1800MM
Pushing stroke	1370MM
FY250 Oil Reservoir:	
Weight	1.2KG
Oil capacity	250ML

## Maintenance

### 一、 Notice

- 1 Machine should be oiled by the rustproof grease, before using. On using, reoil machine and assemble it .
- 2 When connecting water pipe and air pipe, blow off dirty to protect parts.
- 3 Before open machine, should inspect the flexibility and reliability of all control structure and operation part; oil reservoir be filled with lubrication, and measure oil quantity well, ensure machine run regularly.
- 4 When finishing using machine, cut off water supply and let machine run slowly ,then blow off the rest moisture to avoid rusting parts.
- 5 The machine which often use, should pay attention to maintenance. Examine and repair every week at least, Clean the dirty within the machine and note to replace and change the damage and invalidation parts, eliminate the malfunction and hidden trouble.
- 6 If machine should store for a long time, dismantle machine for clean, oil and seal , then placed a dry place.

## 二、Lubrication

Lubrication has great influence in the performance and working life. Do not operate machine without lubricating oil

Temperature	Name	No	Flash point	Kinematic viscosity	Solidifying point	Standard
10— 30℃	Machine oil	N46	180℃	41.4—50.6(40℃)	-10℃	GB443-84
-10—10℃	Machine oil	N22	170℃	19.8—24.2(40℃)	-15℃	GB443-84
-30—10℃	Refrigerator oil	HD-13	160℃	11—15(50℃)	-40℃	Y1213-79

## 三、Air pipe and pressure

- 1、 Air pipe inner dia. is 25mm and it's length is  $\leq 15$ m. Pipe connector dia. is  $\geq 20$ mm.
- 2、 This diagram show the relation between speed and air pressure.(0.4-0.63Mpa for better).

## 四、Water pipe and pressure

Water pipe inner dia. is 13mm and water pressure is 0.2-0.3Mpa.

## 五、Drill

Drill specification is GB6481-86. as draw process shank.

## 六、Dismantlement

- 1、 Distributing valve  
Dismantle and assemble distributing valve, do not knock. After assembling, ensure that valve positioned correctly and is free to move between the two seats.
- 2、 Shank cover  
When dismantling shank sleeve,heat rotations sleeve up to 200℃ , insert shank (shank collar dia is  $\leq 30$ mm) into rotation sleeve, then knock out shank sleeve with bishop. When assembling shank sleeve,heat rotation sleeve up to 200℃ , insert shank sleeve into rotation sleeve, knock shank into bottom.
- 3、 Air connection tube and water connection tube  
When dismantling ,push in air connection tube and water connection tube,fetch steel wire ring clamp with tool. When assembling, push air connection tube and water connection tube into the right handle, put steel wire ring clamp into half slot ,then pull air connection tube and water connection tube
- 4、 Rifle nut  
Turn left to screw the rifle nut .
- 5、 When assembling ,tighten two sides of side bolt nut to ensure every parts of machine work well.

## 七、Safety

- 1、 Ensure that technical safe practices are employed.
- 2、 Pay attention to the position of steel wire ring clamp.
- 3、 Check steel wire ring clamp whether or not abrase, if so, change another at once.

### YT29 Spare parts list

Code	Part No	Name	Qty
1	YT25-3.20	Spring	1
2	YT25-3.21	Setting pin	1
3	25-04	Conical hose nlppe	1
4	No.2x	Hoop	1
5	25-01	Wing nut	1
6	25-16	Pipe connector	1
7	7655-309A	Air connection pipe	1
8	7655-307	Air pipe nut	1
9	30x3-25	O seal ring	2
10	YT25-3.12	Pad	1
11	YT25-3.33	Retaining ring	1
12	YT27-308	Water connection pipe	1
13	YT27-309	Water pipe nut	1
14	18x3-25	O seal ring	1
15	16x2.4GB1235-76	O seal ring	2
16	YT27-310	Water pipe ring	1
17	YT29A-1	Control valve	1
18	YT27-306	Control handle	1
19	GB93 10	Spring pad	1
20	GB6172 M10	Hex high nut	1
21	YT25-3.17A	Fixing pin	1
22	YT27-315	Change-over valve	1
23	YT27-314	Retaining ring	1
24	YT24-3.14A	Presure regulating valve	1
25	YT24-3.13a	Swell ring	2
26	YT27-311	Spring	1
27	YT25-1.15	Crowned spring	4
28	YT25-1.14	Ratchet pawl	4
29	YT30-3.07	Big seal sleeve	1
30	YT30-3.06	Small seal sleeve	2
31	YT27-317A	Right handle	1
32	YT27-319A	Left handle	1
33	YT27-318A	Shockproof handle	1
34	YT27-316	Trigger	1
35	GB879 8x24	Spring pin	1

36	YT25-3.05	Spring Cap	1
37	YT25-3.34	Spring ring	1
38	YT25-3.06	Spring	1
39	18x3-25	O seal ring	1
40	YT25-3.35	Pad	1
41	YT25-3.08	Water valve set	1
42	YT25-3.11	Water valve	1
43	4x2-25	O seal ring	2
44	YT25-3.24	O seal ring	1
45	YT25-3.13	Rubber pad	1
46	YT29-2	Back head	1
47	7655D-2	Water tube sleeve	1
48	YT25-3.14	Air tube sleeve	1
49	YT29-3	Ratchet	1
50	7655D-6	Setting pin	1
51	YT29-4	Valve chest	1
52	YT29-5	Valve	1
53	YT29A-6	Valve sleeve	1
54	YT29A-7	Rifle bar	1
55	YT29-8	Rifle nut	1
56	YT29-9A	Muffle	1
57	No.4x	Hoop	1
58	YT29A-10	Cylinder	1
59	YT29A-11	Guide sleeve	1
60	YT29A-12	Piston	1
61	GB56 M16	Hex high nut	2
62	YT29A-13	Side bolt	2
63	YT29A-14	Air tube	1
64	YT29A-15	Water tube	1
65	YT29-16	Front head	1
66	YT29-17	Rotational sleeve	1
67	GB899 M16	Hex high nut	2
68	7655-205	Yoke spring	2
69	7655-203A	Yoke bolt	2
70	YT25-203	Shank sleeve	1
71	7655-207	Yoke	1

# Structure of YT29A

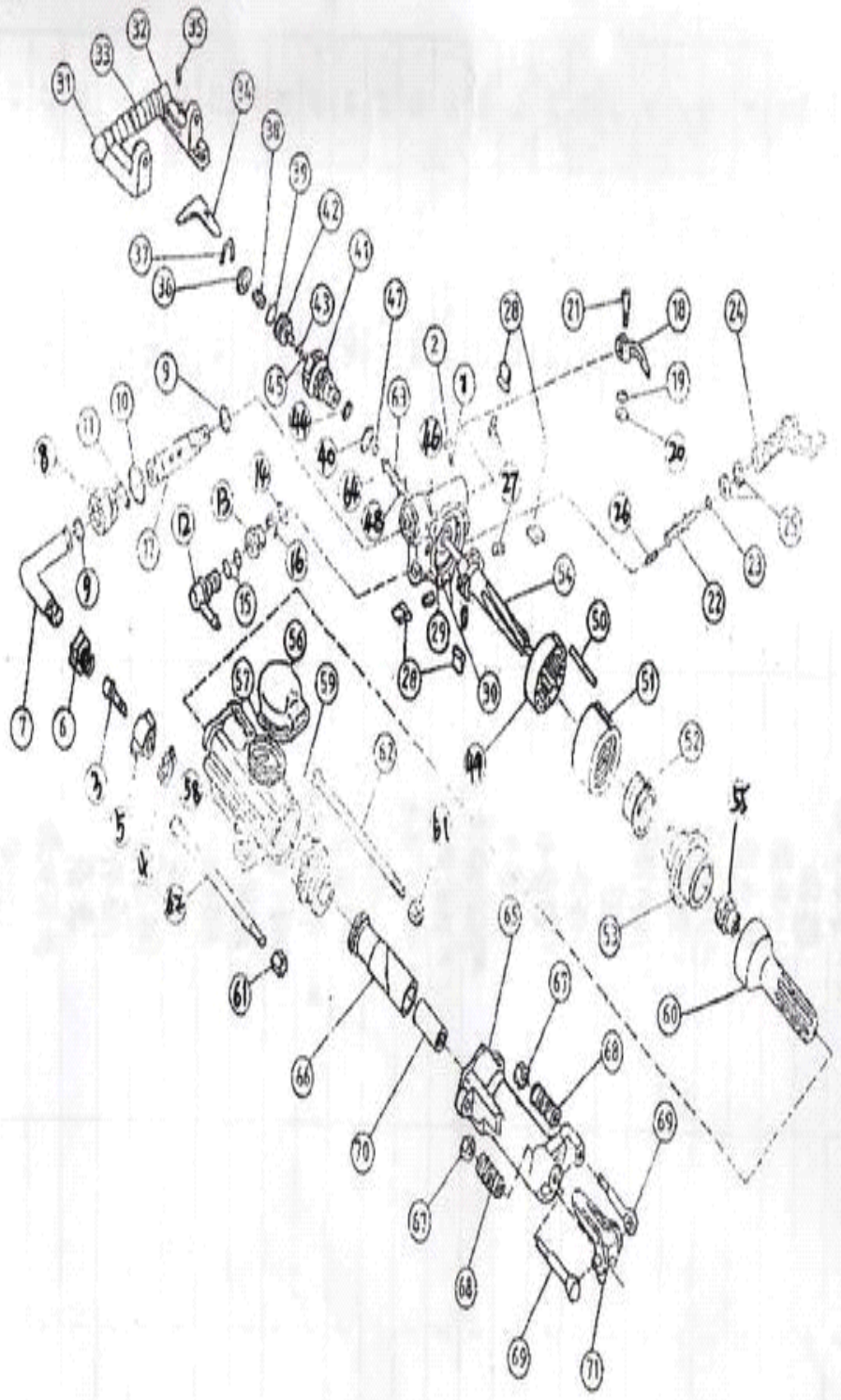


图6 YT29A 凿岩机结构图

